

## BEHAVIOUR AND WELLBEING



PARENTS AND CARERS CAN ACCESS THREE KEY DOCUMENTS ON OUR SCHOOL'S BEHAVIOUR AND WELLBEING PROCEDURES.

- School Information Handbook
- Support Class Information Booklet
- Behaviour Support & Management Plan

To find these documents, head to the school website and click the Family Portal button.

## REWARDING POSITIVE BEHAVIOUR

### PBL REWARD STRUCTURE K-6

PIPS FAST & FREQUENT	Daily Teachers, SLSOs, SAS	Classrooms Playground
MINOR PRIZE	Weekly Class, every Thursday	Drawn from class PIPs.
MAJOR PRIZE	Fortnightly Stage Assembly	Drawn from stage PIPs.
GRAND PRIZE	Termly Assembly of Recognition	Drawn from whole school PIPs.

## HOW TO COMMUNICATE WITH ME



02 4359 1184



GOOGLE CHAT

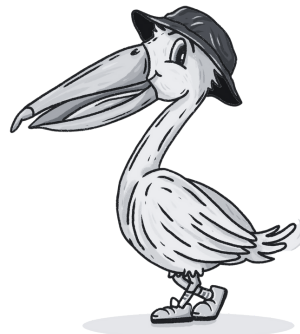
SCAN ME TO ACCESS  
THE 'HOW TO'  
IMAGES



## WHAT TO BRING

INDIVIDUAL SUPPLIES (please label clearly)

- head phones
- paint shirt
- library bag
- school hat
- stationery supplies if they wish



## QUESTIONS AND ANSWERS

**Q. I HAVE A CONCERN OR ISSUE. WHO DO I CONTACT?**

First, the classroom teacher.

**Q: WHERE CAN I FIND THE CANTEEN MENU?**

On our school website in the Parent Portal page.

**Q. IF I AM RUNNING LATE, WHAT DO I DO?**

You must bring your child to the office to sign them in. If you are running later for pick up, please call the school before 3:00pm.



MY TEACHER IS ...

**MRS MCDONALD**

OUR CLASS IS ...

**1/2M**

**2024  
CLASSROOM  
INFORMATION  
HANDBOOK**



## CLASS INFORMATION



Our classroom is located in **C BLOCK**



Our afternoon gate is **CROSSING**



Our buddy class is **1/2D**



Assembly is fortnightly **FRIDAY 2:15PM**



Sports day is **WEDNESDAY**



Homework is due **EVERY FRIDAY**



The school newsletter is **FORTNIGHTLY**



Our library day is **MONDAY**



Our science day is **THURSDAY**



Our health day is **FRIDAY**



We learn resilience every **MORNING**



Teacher checks-in every **SESSION**

**STUDENTS MUST WEAR A SCHOOL HAT,  
SCHOOL JUMPER AND SCHOOL UNIFORM TO  
SCHOOL (THIS INCLUDES BLACK SHOES).**



## ATTENDANCE AT SCHOOL

**EVERY DAY MATTERS AT MANNERING PARK PS.**

Our goal at MPPS is **95%** for every student!

If my child misses 1 day per fortnight, they miss 4 weeks per year. That's 1 year of learning missed over their entire schooling. Missing 1 day per week equals 8 weeks per year, which is 2.5 years of schooling.

## HOMEWORK

### READING



Students are encouraged to read every night for 10 minutes for homework. Complete and return the purple Home Reading log daily.

### MATHEMATICS

$$5+5=10$$

Students are to complete daily maths mental for homework in the booklet provided. Return to school on Friday.

### PHONICS/SPELLING

✓  
ABC

Students will have weekly sight and/or spelling words to learn. Complete the worksheet provided and return to school on Friday.

### PLEASE RETURN HOMEWORK EVERY FRIDAY

Can I OPT OUT of homework for my child?	YES
Is there a consequence for non-completion?	NO
Will homework be marked and returned home?	NO
Can I request additional homework for my child?	NO

## SPEAKING TO YOUR CHILD ABOUT SCHOOL ISSUES

Keep Calm. Don't React.

Remember that there will be two sides to the story.

"Did you let a teacher know?"

"What was your part in this?"

"Have you told a friend how you feel?"

## CLASSROOM EXPECTATIONS



### ON THE FLOOR

Practise active listening and contribute to class lessons.



### AT DESKS

Work responsibly and try my best.



### LINING UP

Take next available space. Wait respectfully and listen to instructions.



### GROUP WORK

Work responsibly and respectfully with my group. Try my best.



### EATING

Sit to eat. Rubbish in the bin. Wait for teacher instructions before play.



### TECHNOLOGY

Practise cyber safety and act responsibly.



### PLAY TIMES

Follow playground expectations at all times. Follow teacher instructions.



### TO EACH OTHER

Hands and feet to myself. Use kind words. Help others.



### OTHER TEACHERS

Demonstrate respectful relationships and be a responsible learner.